



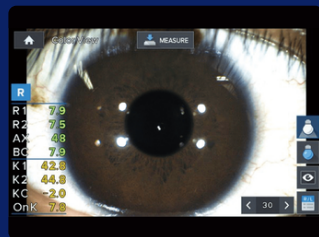
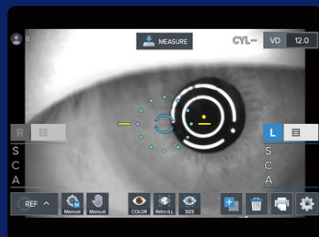
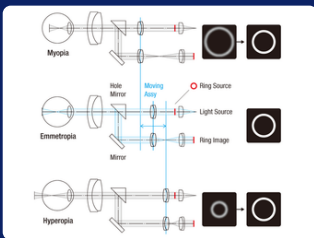
Partnered with:
Huvitz

RK-1E AUTO REFRACTOR - KERATOMETER

Engineered for precise and efficient eye examinations. Its key features include automatic measurement adjustment based on diopter, enhanced accuracy for various eye conditions, rapid alignment guidance, and a Color View Mode for detailed assessment and contact lens fitting. It also provides accurate corneal curvature values for contact lens prescriptions, utilizing a full-color camera and white LED illumination.



FEATURES:



- **Optimized Accuracy for Diverse Patients:**
 - Automatically adjusts measurement based on the patient's refractive error (Smart Assembly Moving), and minimizes uneven light reflection, ensuring precise vision measurements even in patients with cataracts.
- **Fast, Automated Alignment & Capture:**
 - The Aiming Dot quickly guides the user to the patient's visual apex, while the auto-start trigger initiates measurement immediately upon alignment—ensuring a seamless workflow, consistent accuracy, and hands-free repeatability.
- **Color View Mode and Realistic Imaging:**
 - Enables detailed assessment of ocular conditions and contact lens fitting.
 - Provides precise corneal curvature values for accurate lens prescriptions.
 - Uses a full-color camera with white LED illumination to deliver clear, color-true imaging.



CONTACT US

envieye.com | 833-627-0546
sales@nextvision2020.com