

The Industry's Most Trusted Source for Pre-Owned Ophthalmic Equipment and Instruments



- OCTs
- Slit Lamps
- Perimeters
- Phoropters

- Lensmeters
- Visual Acuity Systems
- Exam Chairs & Stands



- Auto Refractors
- Retinal Cameras
- Optical Biometers
- Corneal Topographers



QUALITY

SERVICE

EXPERIENCE



TABLE OF CONTENTS

01	INTRODUCTION	>
02	OCTS	>
04	TONOMETERS	>
05	PERIMETERS	>
06	RETINAL CAMERAS	>
07	TOPOGRAPHERS	>
08	AUTO REFRACTORS	>
10	SLIT LAMPS	>
12	BIOMETERS	>
13	INDIRECTS	>
14	EXAM LANES	>
15	CHAIRS AND STANDS	>
16	AUTO LENSMETERS	>
17	MANUAL LENSMETERS	>
18	PHOROPTERS	>
19	VISUAL ACUITY SYSTEMS	>
20	MISCELLANEOUS	>
21	CONCLUSION	>



The Industry's Most Trusted Source for Pre-Owned Ophthalmic Equipment & Instruments!

Discover the ultimate destination for **pre-owned** ophthalmic equipment and instruments!

With over fifty years of industry expertise, we offer top-notch diagnostic, optical, and ophthalmic equipment, along with a comprehensive range of parts, services, installations, and shipping options—all at competitive rates.

Trust our experience and commitment to quality for all your ophthalmic needs.



Standard **1-year warranty** with lifetime phone support



Lifetime trade-in value on all equipment purchased



Affordable pricing with flexible payment solutions



Extensive range of **quality pre-owned** equipment

QUALITY

- **Precision Engineered:** Equipment meticulously reconditioned and calibrated to meet stringent factory specifications, ensuring optimal performance and reliability.
- **Extensive Selection:** A wide range of high-quality products, each crafted with extraordinary attention to detail, allowing you to find the perfect solutions to meet your specific needs and enhance patient care.

SERVICE

- **Expert Support:** Factory-trained technicians dedicated to delivering exceptional service and ensuring your equipment performs at its best.
- **Lifetime Support:** Enjoy ongoing peace of mind with lifetime telephone support from knowledgeable technicians. Our team is available to answer your questions, troubleshoot issues, and provide expert guidance whenever you need it.

EXPERIENCE

- **Industry Leader:** Unparalleled reputation built on years of excellence across all aspects of the industry. You can trust us to provide reliable, high-quality equipment and exceptional service.
- **Proven Expertise:** Decades of experience in handling, transporting, and servicing all types of equipment. We prioritize safety and reliability in every aspect of our operations.

PRE-OWNED OCTs

OPTOVUE AVANTI



Features:

- High-Resolution Imaging: Utilizes spectral-domain technology for high-speed, high-resolution imaging with 70,000 A-scans/second, capturing detailed retinal structures.
- Advanced Analysis: Enables detailed analysis of retinal nerve fiber layer (RNFL) and ganglion cell complex (GCC) for glaucoma diagnosis and monitoring.
- Optional AngioVue Module: Enables OCT Angiography for non-invasive imaging of retinal and choroidal blood flow, aiding in the diagnosis and management of various ocular diseases.

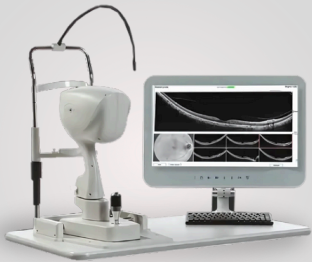
*****Upgraded Software:** Angio Essentials, AngioVue, Epithelium Mapping., Anterior Segment

OPTOVUE IVUE - GEN 2

Features:

- Comprehensive Analysis: Provides precise measurements of retinal thickness, nerve fiber layer (RNFL), ganglion cell complex (GCC), and corneal features.
- Glaucoma Diagnosis and Management: Aids in the diagnosis and management of glaucoma by assessing retinal nerve fiber layer thickness and analyzing structural changes.
- iWellness Exam: Exam that delivers a quick OCT Scan in one single comprehensive report.

*****Upgrade:** Comprehensive Anterior Segment Analysis



OPTOVUE IFUSION

Features:

- Unmatched Image Quality: Combines high-resolution Spectral-Domain iVue OCT with a high-resolution 5.2MP iCam retinal camera for detailed visualization of ocular structures.
- Advanced Imaging Capabilities: Offers vibrant color fundus images, red-free mode, and advanced deconvolution technology for enhanced image clarity and documentation.
- Streamlined Workflow: Integrates OCT and retinal imaging into a single platform, simplifying patient examinations and image acquisition.



OPTOVUE IVUE 80

Features:

- High-Speed Imaging: 80,000 A-scans per second enable faster image acquisition, improving patient comfort and minimizing motion artifacts.
- Enhanced Image Quality: High-speed imaging contributes to higher quality images with improved clarity and detail.
- iWellness Protocol: A quick and easy screening exam helps identify potential eye health concerns and promotes proactive patient care.

*****Upgrade:** Comprehensive Anterior Segment Analysis



HEIDELBERG SPECTRALIS

Features:

- Multi-modality Imaging: Combines spectral-domain OCT and confocal scanning laser ophthalmoscopy (cSLO) for comprehensive eye evaluations.
- TruTrack Active Eye Tracking: Ensures accurate and reliable image acquisition by minimizing motion artifacts.
- BluePeak Blue Laser Autofluorescence: Enables visualization of autofluorescent molecules in the retina for enhanced diagnostic capabilities.
- Versatility: Offers a wide range of imaging modalities and Spectralis modules for comprehensive eye examinations.

*****Different Modes 3-6**



ZEISS CIRRUS 400



Features:

- **Entry-Level Imaging:** Ideal for basic glaucoma and retinal disease assessments at a budget-friendly price point. High-quality imaging for glaucoma and retinal disease diagnosis.
- **Scanning system:** Live OCT Fundus technology provides the fundus image using the OCT scanner instead of LSO.

ZEISS CIRRUS 500



Features:

- **High-Resolution OCT Imaging:** Delivers detailed retinal and optic nerve imaging with precise segmentation for accurate disease assessment.
- **Glaucoma and Retinal Disease Management:** Includes advanced features like Macular Thickness Analysis, Ganglion Cell Analysis, and Guided Progression Analysis (GPA).

ZEISS CIRRUS 4000



Features:

- **Improved Speed and Accuracy:** Offers faster image acquisition and enhanced image quality.
- **Advanced Glaucoma and Retinal Disease Analysis:** Provides more sophisticated analysis tools for glaucoma and retinal disease management.
- **Line Scanning Ophthalmoscope (LSO):** Allows for accurate and specific targeting creating high quality fundus images.

ZEISS CIRRUS 5000



Features:

- **Ultra-Fast OCT Imaging:** Offers high-speed, high-resolution OCT scans for precise retinal, optic nerve, and anterior segment analysis.
- **Enhanced Capabilities:** Incorporates the latest advancements in OCT technology for superior image quality (LSO).
- **Fast Trac Technology:** Reduces eye motion artifacts without sacrificing patient throughput with a proprietary scan.

*****All Cirrus Units Upgraded Software:**
Premier Anterior Segment
(Angioplex Only Available for the 5000 Model)

TOPCON MAESTRO 1

Features:

- **Fully Automated Operation:** Simplifies image capture with autofocus, alignment, and capture functions.
- **Comprehensive ONH and Macula Imaging:** Captures detailed 2D, 3D, and color fundus images of the optic nerve head (ONH) and macula in a single, wide-field 12mm x 9mm scan.
- **Space-saving Design:** Combines OCT and fundus camera functionality in a compact system.



TOPCON MAESTRO 2

Features:

- **OCT & Fundus Imaging:** Combines high-resolution OCT and true-color fundus photography, providing detailed retinal analysis with a single touch.
- **Automated & User-Friendly:** With fully automated capture, alignment, and tracking, the Maestro 2 is designed for efficiency.
- **Glaucoma Analysis with Hood Report:** Enhances glaucoma detection by integrating OCT data with visual field correlation, offering an intuitive and clinically relevant summary for early diagnosis and monitoring.

*****Upgraded Software:** OCTA



PRE-OWNED TONOMETERS

NIDEK MARCO NT-510

Features:



- Soft Air Puff Control: Ensures patient comfort during IOP measurement.
- Auto Tracking and Measurement: Automates key measurements for increased efficiency and accuracy.
- Motorized Chin Rest: Provides comfortable and consistent patient positioning.
- Convenient Data Transfer: Facilitates easy data transfer and integration with electronic medical records (EMR) systems.
- Tilting 5.7" Color LCD Screen: Offers ergonomic viewing for both the operator and patient.

TOPCON CT-80

Features:



- 3x Faster Measurements: Reduces measurement time by 30% compared to traditional methods.
- Superior Accuracy: Advanced dual sensor system delivers reliable IOP readings unaffected by external factors.
- Convenient Documentation: Built-in printer enables quick and easy printing of detailed reports.

REICHERT 7

Features:



- Effortless Operation: Automated alignment, no joysticks, and easy patient positioning.
- Fast and Accurate Measurements: One-touch multiple measurements, quick fixation, and rapid measurement process.
- Seamless Integration: EMR connectivity and internal printer for efficient data management.
- Comfortable Patient Experience: Soft air puff, quiet operation, and comfortable headrest.

PRE-OWNED TONO-PENS

ICARE TA011



REICHERT AVIA



MEDTRONIC TONOPEN XL



ICARE IC100



REICHERT XL



ACCUTOME ACCUPEN



PRE-OWNED PERIMETERS

ZEISS FDT 710

Features:



- Ultra-Fast Screening: Analyze one eye in just 35 seconds with supra-threshold testing.
- Enhanced Workflow: Easy operation allows staff to quickly learn and perform tests.
- Space-Saving Design: Compact and lightweight (19 lbs) for easy mobility.
- Affordable Option: Brings visual field testing to practices of all sizes.

ZEISS MATRIX 715

Features:



- Screening modes as well as full threshold visual fields.
- Enhanced Optics: Features a 30° field of view, providing comprehensive and detailed visual field maps.
- Data Management: Stores 1 million exams and offers comprehensive data storage and analysis capabilities.

ZEISS MATRIX 800

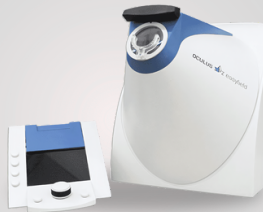
Features:



- Reliable Results: Generates reports comparable to the Humphrey HFA, the industry standard.
- Advanced Technology: Utilizes Frequency Doubling Technology to detect damage to M-cells.
- Data Connectivity: Connects to office networks, EHRs, and the FORUM® platform.
- Screening modes as well as full threshold visual fields.

OCULUS EASYFIELD

Features:



- Fast and Efficient Testing is achieved with shorter examination times, even for threshold tests, and streamlined workflows eliminating the need for a dark room.
- Comprehensive Testing capabilities include both supra-threshold and threshold tests, along with advanced glaucoma analysis features.

HAAG STREIT OCTOPUS 600

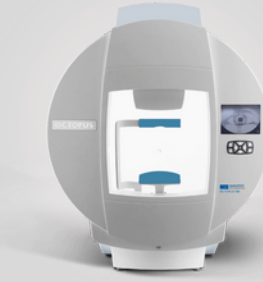
Features:



- Glaucoma Screening Test: Under a minute screening allows for increased patient throughput and early detection.
- Cluster Analysis & Polar Analysis/Trend: Advanced algorithms for identifying and characterizing glaucomatous damage.
- EyeSuite Progression Analysis: Quantifies and localizes visual field changes over time, aiding in treatment decisions.

HAAG STREIT OCTOPUS 900

Features:



- All-in-One Solution: Covers a wide range of perimetry needs, including standard automated perimetry (SAP), short wavelength automated perimetry (SWAP), flicker perimetry, and Goldmann kinetic perimetry.
- Semi-Automated Kinetic Perimetry: Improves efficiency and reduces operator burden in kinetic testing.

ZEISS 740i & 745i & 750i

Features:



- Fast & Efficient Testing: Enables rapid testing with supra-threshold testing in as little as 35 seconds per eye.
- Reliable Results: Provides clinically validated results for accurate glaucoma diagnosis.

Upgrades for 745i: SITA-SWAP software, Gaze Tracking.

Upgrades for 750i: Head Tracking, Vertex Monitor, Magneto-Optical Disk Backup.

ZEISS HFA 3 | 840,850,860

MODELS

Features:



- Gold-Standard Perimetry: Provides reliable and accurate visual field testing.
- Custom Testing: Offers flexibility in test protocols for kinetic and static testing to suit individual patient needs.
- Guided Progression Analysis (GPA): Helps in the management of glaucoma and other neuro-ophthalmic diseases.

Upgrades for 850: Vertex Monitoring, RelEYE Monitor, Standard Trials Lens Set.

Upgrades for 860: Automated Liquid Trial Lens.

PRE-OWNED RETINAL CAMERAS

CANON CR-2



Features:

- Compact and Portable: Ideal for any practice setting due to its small size and portability.
- High-Resolution Images: Captures high-quality retinal images for accurate diagnosis.
- User-Friendly: Easy to use with features like auto-focus and capture, and complemented by versatile software for efficient image management and analysis.

***Upgraded Model: CR-2 Plus with AF

TOPCON TR-NW8

Features:

- High-Resolution Imaging: Captures high-resolution images with a 16.2 MP camera and a 45° field of view.
- Autofocus and Capture: Simplifies image acquisition with automated functions.
- Red-Free Imaging: Enables the capture of red-free images for enhanced visualization of retinal vessels.



TOPCON TRC-NW400

AVAILABLE WITH AND WITHOUT IMAGENET

Features:

- Fully Automated Operation: Features automated focusing, capture, and eye-to-eye transfer for efficient workflow.
- High-Resolution Imaging: Captures high-quality images with a large color sensor and a 45° field of view.
- DICOM Compliance: Ensures seamless integration with existing hospital and clinic networks.
- Advanced Features: Includes auto stereo feature and 9 internal fixation targets for comprehensive imaging.



ZEISS VISUCAM 224

Features:

- Ultra-High Resolution Imaging: Delivers exceptional image quality with a 24-megapixel sensor and advanced ZEISS optics.
- Fundus Autofluorescence (FAF): Enables non-invasive imaging of autofluorescent molecules in the retina for the diagnosis of various eye diseases, including AMD.
- Multiple Imaging Modes: Offers a range of imaging modes, including Color, Red-free, Red, and Blue, for comprehensive eye examinations.



CENTERVUE DRS

Features:

- Effortless Automation: Fully automated imaging process, including patient sensing, alignment, focusing, and flash adjustment.
- High-Quality Imaging: Produces detailed, high-resolution images for accurate diagnosis.
- Data Connectivity: Supports various export formats for seamless integration with EMR systems.



CENTERVUE DRS PLUS

Features:

- TrueColor Confocal Technology: Delivers superior image quality with enhanced clarity and contrast.
- Multiple Imaging Modes: Offers various imaging modes, including red-free and stereo views, for comprehensive eye examinations.
- Small Pupil Imaging: Compatible with pupils as small as 2.5mm.

***Upgrade: Captures panoramic views up to 80° with mosaic license.

***Upgrade: Remote viewing software.



ICARE EIDON/EIDON AF UWF

Features:

- TrueColor Confocal Imaging: Delivers high-resolution, true-to-life images with enhanced contrast and detail.
- Widefield Imaging: Captures a broad field of view of the retina, including peripheral regions.
- Multiple Imaging Modalities: Offers TrueColor, Red-Free, Infrared, Autofluorescence (AF), and Blue imaging options for comprehensive assessments.



PRE-OWNED TOPOGRAPHERS



ZEISS ATLAS 9000

Features:

- **Proven Technology:** Utilizes Placido Disk Technology with patented Cone-of-Focus Alignment System.
- **SmartCapture Technology:** Analyzes multiple images during alignment and automatically selects the highest quality image.
- **Comprehensive Contact Lens Fitting:** Includes MasterFit II Contact Lens Software for efficient and accurate contact lens fitting.
- **Windows Version:** Offers a Windows version for advanced analysis, including Atlas/Meniscus Height on CA.



TOPCON CA-800

Features:

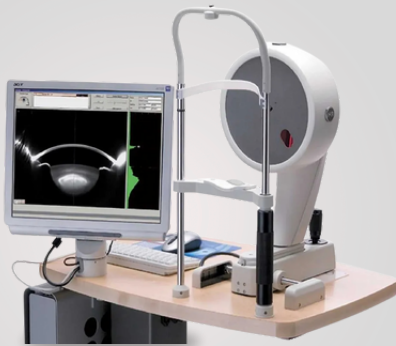
- **Detailed Corneal Mapping:** Provides comprehensive and accurate corneal topography data.
- **Versatile Output Options:** Flexible data export for seamless EHR integration.
- **Standalone Capability:** Functions as a standalone unit, eliminating the need for external computer systems.
- **Comprehensive Eye Care:** Includes additional features like meibomian gland imaging and pupillometry for enhanced clinical assessments.
- **Windows Version:** Enables advanced analysis, including Atlas/Meniscus Height on CA.



MEDMONT E-300

Features:

- **Small-Cone Placido Disc Design:** Ensures precise data capture across the entire cornea, eliminating data loss.
- **Limbus-to-Limbus Coverage:** The largest capture area of any placido ring topographer.
- **Non-Invasive Dry Eye Analysis:** Auto TBUT feature offers a reliable, non-invasive method for measuring tear breakup time.
- **Rapid Data Acquisition:** Captures high-quality corneal topography maps in seconds.



OCULUS PENTACAM

Features:

- **Comprehensive Corneal Analysis:** Provides detailed 3D images and measurements of the cornea, including topography, pachymetry, and anterior chamber depth.
- **Fast and Accurate Measurements:** Auto-release measurements ensure fast, reproducible, and reliable data acquisition.
- **Advanced Analysis Tools:** Includes features like Belin/Ambrósio Enhanced Ectasia Display, Topographical Keratoconus Classification (TKC), and Belin ABCD Keratoconus Staging.
- **Glaucoma Screening:** Enables glaucoma screening with pachymetry-based IOP correction and chamber angle analysis.



OCULUS PENTACAM HR

Features:

- **High-Resolution Imaging:** Provides detailed 3D images of the anterior eye segment for comprehensive analysis.
- **Advanced Analysis:** Offers advanced analysis tools including Belin/Ambrósio Enhanced Ectasia Display, Topographical and Tomographical Keratoconus Classifications, and Belin ABCD Keratoconus Staging.
- **Glaucoma Screening:** Enables glaucoma screening with pachymetry-based IOP correction and chamber angle analysis.
- **Comprehensive Corneal Assessment:** Provides detailed measurements of corneal topography, pachymetry, and anterior chamber depth.

PRE-OWNED AUTOREFRACTORS



TOPCON KR-8800

Features:

- **Fast and Accurate Measurements:** Delivers rapid and precise refraction and keratometry readings.
- **Rotary Prism Technology:** Ensures enhanced accuracy in measurements.
- **Efficient Workflow:** Auto fire mode and simultaneous display of right/left readings.



TOPCON KR 8900

Features:

- **Precise Measurements:** Delivers accurate refraction and keratometry readings, even on pupils as small as 2mm.
- **Rotary Prism Technology:** Ensures enhanced accuracy in measurements.
- **Efficient Workflow:** Auto fire mode enables fast and reliable data collection.



TOPCON KR-800

Features:

- **Accurate Measurements:** Utilizes Topcon's Rotary Prism technology for highly accurate refraction and keratometry readings.
- **Improved Ergonomics:** 23% lighter making a smoother operation of the unit.
- **Seamless Integration:** Connects easily with EMR for efficient data management.

TOPCON KR-1

Features:



- **Rapid and Precise Measurements:** Delivers fast and accurate refraction and keratometry readings with Rotary Prism technology.
- **Fully Automated Operation:** Simplifies the measurement process with automated functions.
- **360° Rotatable Monitor:** Provides flexible viewing angles for the operator.

TOPCON KR-1W

Features:



- **5-in-1 Functionality:** Combines aberrometry, topography, keratometry, pupillometry, and autorefraction in one unit.
- **Pre & Post-Op Data:** Provides valuable information for cataract and refractive procedures.
- **Comprehensive Analysis:** Offers multiple maps for in-depth analysis of the refractive system.

ZEISS IPROFILER PLUS



Features:

- **4-in-1 System:** Combines autorefractometer, wavefront aberrometer, corneal topographer, and keratometer in one compact device.
- **Comprehensive Eye Profile:** Provides detailed information for personalized patient care.
- **Streamlined Workflow and Enhanced Patient Care:** With integrated tools and data management, enabling precise data capture for optimal solutions and improved patient care.

NIDEK ARK-1



Features:

- **Large Pupil Zone Imaging:** Measures refraction in a wide area up to 6mm and compares it to central refraction.
- **SLD & Sensitive CCD:** Improves measurement capability even in dense cataracts.
- **Mire Ring Keratometry:** Reduces eyelid artifacts for reliable keratometry measurements.
- **3D Auto-Tracking:** Ensures accurate alignment and tracking during measurements.
- **Retroillumination Imaging:** Provides clear images of internal eye structures for opacity assessment.

NIDEK 530-A



Features:

- **Pupil Zone Imaging:** Captures a wider area of the eye for more comprehensive analysis.
- **3D Auto-Tracking:** Ensures accurate alignment and automated measurements.
- **Double Mire Ring Keratometry:** Provides precise keratometry readings.
- **Auto-Alignment, Focusing & Firing:** Simplifies the measurement process with automated functions.

REICHERT RK 600



Features:

- **Fast and Accurate Measurements:** Delivers quick and precise refraction and keratometry readings.
- **Wide Measurement Range:** Accommodates a broad range of patients.
- **Built-in Printer:** Provides convenient hard copy printouts of measurement results.

REICHERT OPTOCHEK PLUS



Features:

- **Rapid Data Acquisition:** Auto-Quick mode initiates measurements as soon as alignment is achieved, increasing patient throughput.
- **IOL Measurement Mode:** Enables measurements on patients with intraocular lens implants or cataracts.
- **Wide Measurement Range:** Accurately measures a broad range of refractive errors.
- **Automated PD Measurement:** Automatically measures pupillary distance after reading both eyes.

NIDEK TONOREF II WITH TONO



Features:

- **3-in-1 Functionality:** Combines autorefractor, keratometer, and non-contact tonometer in one compact unit.
- **Accurate Measurements:** Provides precise refraction and keratometry readings, even on patients with cataracts or IOLs.
- **Gentle Tonometry:** Offers comfortable and quiet non-contact intraocular pressure measurement.

VISIONIX VX-110 WITH TOPO



Features:

- **Comprehensive Eye Analysis:** Combines corneal topography, wavefront aberrometry, and objective refraction in one device.
- **Accurate Diagnostics:** Provides precise measurements for various eye conditions, including keratoconus and cataracts.
- **Enhanced Contact Lens Services:** Supports fitting for rigid and multifocal contact lenses.

NIDEK OPD SCAN III



Features:

- **5-in-1 Functionality:** Combines autorefraction, keratometry, pupillometry, corneal topography, and wavefront aberrometry.
- **Comprehensive Eye Analysis:** Provides detailed information on refraction, corneal shape, and higher-order aberrations.
- **Advanced Topography:** Utilizes blue light and a 33-ring placido disc for detailed corneal mapping.

VISIONIX VX120+



Features:

- **Comprehensive Eye Analysis:** Combines autorefraction, wavefront aberrometry, corneal topography, anterior chamber analysis, and non-contact tonometry.
- **Anterior Segment Analysis:** Crucial for diagnosing and managing a wide range of conditions.
- **Ocular Aberrometry:** Measuring higher-order aberrations can provide insights into visual quality and guide customized vision correction.
- **Automated Measurements:** Increases efficiency with automated right/left eye movement, tracking, focusing, and measurement.

PRE-OWNED SLIT LAMPS

MARCO

Known for their robust and reliable slit lamps, often favored for their durability and ease of maintenance. Marco instruments are typically well-regarded for their solid construction and straightforward operation, making them a popular choice for many practitioners.

G2



G2 ULTRA



M2



G4 ULTRA



5 ULTRA



B2



SL-2E



SL-2ED



SL-2G



TOPCON

A well-established brand, Topcon offers a diverse selection of slit lamps known for their reliability, ease of use, and competitive pricing. They provide a good balance of features and affordability, making them a popular choice for many practices.

SL-D2



SL-D7



SL-D301



ZEISS

A global giant in optics, Zeiss slit lamps are synonymous with exceptional image quality and precision engineering. They often incorporate advanced technologies and sophisticated imaging capabilities. Zeiss instruments are known for their reliability and long-lasting performance.

SL-115



SL-120



SL-130



BC-900



BD 900



HAAG STREIT

A leader in ophthalmic technology, Haag-Streit offers a wide range of slit lamps, from basic models to highly advanced systems with cutting-edge features like integrated cameras and software. They are renowned for their ergonomic design, superior optics, and commitment to innovation.

BM-900/BM-900 LED



BQ 900/ BQ 900 LED



PRE-OWNED APPLANATION TONOMETERS

NIKON R900



OPTILASSA OP1H



HAAG STREIT R900



HAAG STREIT AT900



HAAG STREIT 870



ZEISS AT-020



PRE-OWNED BIOMETERS

ZEISS IOL MASTER 500

Features:

- Unwavering Accuracy: Delivers precise and repeatable measurements, leveraging distance-independent keratometry and a vast library of over 300 optimized lens constants.
- Exceptional Speed & Efficiency: Completes measurements for both eyes in under 60 seconds with an intuitive interface.
- Markerless Toric IOL Alignment: Integrates seamlessly with the ZEISS Cataract Suite for precise and efficient toric IOL alignment.



ZEISS IOL MASTER 700

Features:

- Total Keratometry (TK): Comprehensive analysis of both anterior and posterior corneal surfaces for informed surgical decisions.
- Swept-Source Biometry: Highly accurate axial length measurements, even in challenging cases like dense cataracts.
- Full Eye-Length Measurement: Comprehensive assessment of all crucial eye parameters for personalized treatment plans.
- Enhanced Connectivity and Data Management: Seamless integration with EMR systems.



TOPCON ALADDIN

Features:

- 9-in-1 Functionality: Measures axial length, keratometry, corneal topography, anterior chamber depth, lens thickness, central corneal thickness, white-to-white, corneal Zernike analysis, and pupillometry.
- Comprehensive IOL Power Calculation: Includes Barrett IOL Calculation Suite, Olsen formula, and calculations for conventional, post-refractive surgery, and toric IOLs.
- Early Disease Detection: Screens for conditions like keratoconus.
- Accurate IOL Calculations: Determines IOL power for cataract surgery.
- RX/AL Trends Module: Tracks changes in refractive error and axial length over time.



TOPCON MYAH

Features:

- Multi-functional: Designed specifically for managing myopia progression, this multi-functional device integrates optical biometry, corneal topography, and contact lens fitting software.
- Optical Biometry: Provides accurate and non-invasive axial length measurements to track myopia progression.
- Corneal Topography: Creates detailed corneal maps for analysis and comparison across visits.
- Contact Lens Fitting Suite: Offers tools for fitting various contact lenses, including rigid gas permeable (RGP), orthokeratology (Ortho-K), and simulations.
- Meibography: Captures images of the meibomian glands, which are important for tear film health.



HAAG STREIT LENSTAR LS900

GEN 1 & 2 WITH APS

Features:

- Comprehensive Measurements: Measures Axial Length, ACD, Lens Thickness, Corneal Thickness, Keratometry, Pupillometry, and White-to-White distance.
- Dual Zone Keratometry: Provides precise measurements of K values, axis, and astigmatism for toric IOL planning.
- Advanced Technology: Utilizes Optical Low Coherence Reflectometry (OLCR) for accurate measurements.
- Integrated IOL Calculation: Includes built-in formulas for IOL power calculation.

Upgrades:

- T-Cone Topography: Provides additional corneal topography data for advanced analysis.
- Toric Calculator: Supports sophisticated planning of toric IOLs.
- Auto Positioning System (APS): Automates the scanning process.



PRE-OWNED INDIRECTS

KEELER ALL PUPIL



KEELER ALL PUPIL II WIRED AND WIRELESS



HEINE OMEGA 180



HEINE OMEGA 500



TOPCON ID-10



KEELER VANTAGE PLUS LED WIRED AND WIRELESS



Features:

- **Intelligent Optical System:** Automatically adjusts optics based on aperture size for optimal stereoscopic views.
- **Vivid Illumination:** High-quality LED with adjustable brightness and neutral white color temperature for exceptional clarity.
- **Balanced Comfort:** Lightweight design and breathable padding for extended wear without fatigue.
- **High Magnification:** Hi-Mag lens provides a 1.6x magnified view of the macula and optic disc.
- **Wireless Freedom:** Choose between the wired or wireless model for maximum flexibility.

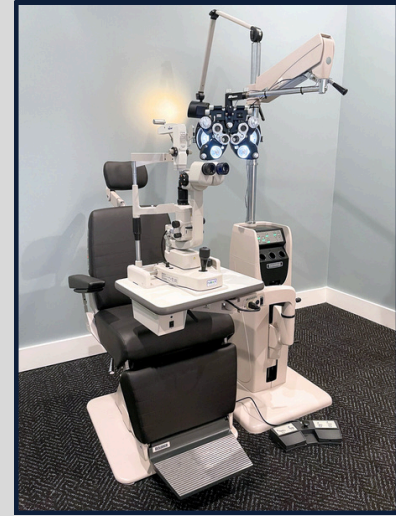
HEINE OMEGA 600

Features:

- **Enhanced VisionBOOST:** Significantly improves diagnostic accuracy with unique visionBOOST technology.
- **Brightest Fundus Images:** Provides the brightest fundus images with true color rendering using LEDHQ technology.
- **Best 3D Imaging:** Offers superior 3D imaging capabilities with Stereoscopic Adjustment Technology, enabling clear views in dilated and undilated pupils, even in premature and newborn patients.
- **Personalized Fit:** Ergonomically positioned controls and adaptable for right and left handed users.



PRE-OWNED EXAM LANES



- Starting as low as \$13,995
- SAVE up to \$5,000 with Trade-Ins
- 1-Year WARRANTY

Upgrade Your Practice with Pre-Owned Exam Lanes!

Experience the quality and efficiency of top-tier exam lanes at a fraction of the cost. Our pre-owned lanes are meticulously refurbished to ensure optimal performance and longevity. Enhance patient flow and elevate your practice with reliable and cost-effective pre-owned solutions.

Why Choose Refurbished?

- **Cost Savings:** This is the most compelling reason. Pre-owned equipment typically costs a fraction of the price of new, allowing you to significantly reduce your up front investment.
- **High Quality:** Next Vision Instruments thoroughly refurbish pre-owned equipment to ensure it meets high standards of quality and safety. You can often find equipment from top brands at a fraction of the original cost.
- **Environmental Responsibility:** By choosing pre-owned, you're contributing to a more sustainable healthcare environment. You're giving high-quality equipment a second life, reducing waste and minimizing your environmental impact.
- **Increased Choice:** Benefit from a wider selection of models and configurations to find the perfect fit for your specific needs.
- **Flexibility:** Pre-owned options often provide more flexibility in terms of budget and finding equipment that meets your specific needs and preferences.

PRE-OWNED CHAIRS & STANDS

Experience the perfect blend of performance and value with our selection of top-quality refurbished exam chairs and stands. Upgrade your practice with trusted brands like Marco, Reliance, and Topcon, ensuring patient comfort and staff efficiency. Our meticulously refurbished equipment offers exceptional durability and ergonomic design, all at a fraction of the cost of new. Optimize your patient flow and elevate your practice with our cost-effective and sustainable solutions.

MARCO AUTO ENCORE AND DELUXE 2



MARCO EZ TILT AND DELUXE



RELIANCE 5200 AND 7720



RELIANCE 980 AND 7900



RELIANCE FX 920 AUTO TILT AND 7900



TOPCON OC-2200 AND IS-5500



ALSO AVAILABLE FOR PURCHASE:

A large selection of Chairs and Stands from ALL major manufacturers.

PRE-OWNED AUTO LENSMETERS



REICHERT AL-500

Features:

- Tilting, Color Display: Clear, bright, full-color LCD screen with tilting housing for comfortable viewing.
- Built-in Printer: Fast and quiet printer for convenient data printouts.
- Accurate and Repeatable Measurements: Ensures reliable and consistent results.



VISIONIX VX-36

Features:

- Blue and UV light measurement: Accurate measurement of both blue and ultraviolet light transmission.
- Automatic progressive lens detection: Seamlessly identifies progressive lenses for quick and accurate measurements.
- Improved ergonomics: Adjustable 7" articulating color LCD touchscreen for optimal comfort.



MARCO NIDEK LM-1000

Features:

- Hartmann-Shack Wavefront Technology: Utilizes 108 points of data for precise lens measurement.
- Expanded Prism Measurement Range: Measures up to 20 diopters.
- Automatic Progressive Lens Detection: Accurately measures high power progressive lenses.
- Automatic R/L Recognition: Automatically identifies right and left lenses.



TOPCON CL-200

Features:

- Green Light Reading Beam: Eliminates the need for ABBE compensation, enhancing measurement precision.
- Progressive Lens Measurement: Measures progressive lenses accurately and efficiently.
- Built-in Thermal Printer: Generates hard copies of measurement results.
- PD Measurement: Measures pupillary distance.



VISIONIX VX-40

Features:

- Fully Automated: No user input required for lens analysis or measurement.
- Fast and Efficient: Complete prescription analysis in 30 seconds.
- Comprehensive Analysis: Detects and analyzes single vision, bifocals, and progressive lenses.
- Visual Topography: Provides a clear visual representation of power ranges across the lens.



MARCO NIDEK LM-600

Features:

- Hartmann-Shack Principle: Utilizes 108 data points for accurate, fast, and reliable measurements.
- Automatic Lens Detection: Automatically determines lens type and switches measuring mode.
- Progressive Lens Graphing: Graphs power transitions to indicate changes around the ADD portion.
- UV Transmittance Measurement: Shows UV transmittance between 0 and 100% in 1 or 5% steps and allows for comparison between lenses.



TOPCON CL-300

Features:

- Large LCD touchscreen: 5.7-inch color display for intuitive operation.
- Green light beam: Accurate power measurement for various lens designs.
- UV transmission measurement: Educates patients on UV protection in eyewear.
- Contact lens measurement: Compatible with contact lenses using accessories.

PRE-OWNED MANUAL LENSMETERS



MARCO 101 / 101 LED

Features:

- Versatile Measurement: Measures conventional lenses from 30 to 90 millimeters in diameter, and both hard and soft contact lenses.
- Accurate Readings: Features a prism compensator, external power and axis readings, and an American-style cross-line target for precise measurements.
- LED Illumination: Provides clear and bright illumination for accurate readings.

TOPCON LM-6E



Features:

- Accurate Measurements: Precisely measures lens power, cylinder, and axis for accurate prescription determinations.
- External Axis and Power Readings: Allows for easy and direct reading of lens parameters.
- Prism Compensator: Facilitates accurate measurements of lenses with prism.

TOPCON LM-8E



Features:

- LED Illuminated Target: Provides bright, glare-free viewing for precise measurements.
- Internal and External Reading Scales: Offers flexibility in measurement preferences.
- Built-in Prism Compensator: Accurately measures lenses with prism prescriptions.

BAUSCH AND LOMB 70



Features:

- Built-in Solid State Electronic Light Intensifier: Enables the checking of absorptive lenses.
- Measures Sphere, Cylinder, and Prism Power: Determines the complete optical prescription of lenses.
- Measures Finished Glasses: Verifies prescription accuracy and identifies vertical prism differences.

SHINN NIPPON LM-25D



Features:

- Cross Line and Corona Target: Provides accurate measurement of lens power.
- Prism Compensator: Allows for precise measurement of prism in lenses.
- 90-Degree Tilt Capability: Enables measurement of large diameter lenses.

PRE-OWNED PHOROPTERS

Upgrade your practice with high-quality, refurbished phoropters from leading manufacturers. Experience the precision and efficiency of top-tier equipment at a fraction of the cost. Our meticulously refurbished phoropters ensure accurate and reliable refractive examinations while maximizing your budget.

MARCO RT-300
(+/- CYL)



MARCO RT-700
(+/- CYL)



TOPCON VT-10
(+/- CYL)



NIDEK RT-600
(+/- CYL)



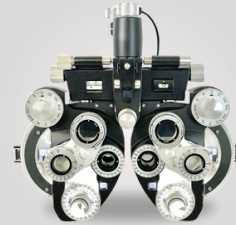
REICHERT 11625
(+/- CYL)



REICHERT 11635
(+/- CYL)



REICHERT 11636 LIGHTED
(+/- CYL)



Features:

- Fast Lens Rotation: Enables quick and comfortable refractions for patients.
- Comprehensive 21-Point Refraction: Provides accurate and detailed measurements of refractive error.
- Automatic Data Input: Streamlines workflow by automatically transferring data from pre-test instruments.
- Color-Coded Cross Cylinder: Simplifies and speeds up astigmatism testing.

TOPCON CV-5000S



MARCO TRS-6100



Features:

- Programmable Monocular Fogging: Facilitates accurate refraction by controlling accommodation.
- Instant Prescription Comparison: Quick and easy comparison of current and previous prescriptions.
- 2EMR/EHR Integration: Seamlessly connects with EMR systems for efficient data management.
- Automatic Pupil Tracking: Ensures precise and consistent measurements.

NIDEK RT-5100

Features:

- Contrast & Reverse Functions: Evaluates visual acuity under various conditions, including low-contrast and reverse conditions.
- Night Mode: Measures visual acuity under low-light conditions for patients experiencing night vision issues.
- Automated Features: Automated forehead position detection and data entry for improved efficiency.
- EMR systems for efficient data storage and retrieval.



PRE-OWNED VISUAL ACUITY SYSTEMS

REICHERT LONGLIFE



Features:

- Quick-Change Socket: Easy and secure bulb replacement.
- Versatile Vectographic Slides: Offers a wide range of tests, including astigmatism, acuity, muscle balance, stereopsis, and more.

TOPCON ACP-8



Features:

- Crystal-clear projection: Enjoy sharp, defined images with wide projection size (330 x 270).
- Swift chart presentation: A cordless remote allows instant projection of 30 test charts at a lightning-fast 0.03 seconds per frame.

NIDEK CP-770



Features:

- Instant Random Access: Remote control allows quick switching between 33 popular charts.
- Chart Masking Buttons: Isolate specific areas of the chart for targeted assessments.

REICHERT CLEAR CHART 2



Features:

- High-Resolution Display: The 19-inch LED backlit display offers bright, high-contrast images.
- Comprehensive Testing Options: Wide range of optotypes, contrast sensitivity, and includes patient education slides.

TOPCON VISICHART



Features:

- Large 17" LCD Display: Provides a clear and easily readable display with a wide viewing angle for both patient and examiner.
- Versatile Chart Options: Includes a variety of charts, such as ETDRS, for comprehensive and vision assessment.

MARCO SC-1600 LCD



Features:

- Contrast Sensitivity Testing: Measures contrast at three distinct levels below normal threshold.
- Comprehensive Testing Options: Choose from 33 popular charts including, snellen, numbers, and children.

REICHERT CLEAR CHART 4X



Features:

- High-Resolution Display: 24-inch high-resolution LED backlit display provides clear and readable images.
- Advanced Testing: Offers astigmatism testing, contrast sensitivity testing, and color vision testing, including color stereo testing.

TOPCON CC-100



Features:

- White Maddox LED light source for precise measurements and accurate results.
- Comprehensive test options including ETDRS and other common visual acuity tests.

HAAG STREIT STIMULI



Features:

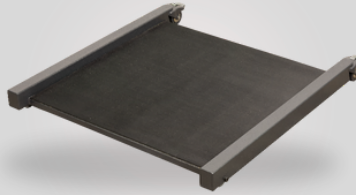
- Advanced Technology: Utilizes a 21.5" iMac.
- Randomized Optotype Presentation: For more accurate acuity testing, optotypes are presented randomly to reduce the impact of patient recall.

PRE-OWNED MISCELLANEOUS

PUPILOMETERS



CHAIR MOVERS



SWIVEL MIRRORS



SINGLE TABLES



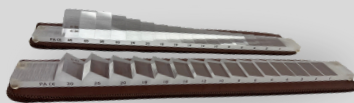
DOUBLE TABLES



STOOLS



PRISM BARS



TRIAL FRAMES



TRIAL LENS SETS



DIAGNOSTIC HAND INSTRUMENTS



DIAGNOSTIC LENSES



With five decades of expertise, we offer top-notch diagnostic, optical, and ophthalmic equipment along with parts, services, installations, & shipping — **all at competitive rates.**

- **Unparalleled Selection:** Access a curated inventory of pre-owned ophthalmic and optical equipment from leading manufacturers.
- **Exceptional Quality:** Each piece undergoes rigorous testing and reconditioning by our expert technicians, ensuring optimal performance and reliability.
- **Comprehensive Support:** Benefit from professional installation, expert maintenance, and lifetime phone support from our knowledgeable team.
- **Cost-Effective Solutions:** Invest wisely with our competitively priced pre-owned equipment, maximizing your return on investment.
- **Partners in Success:** We collaborate with you to find the ideal solutions for your practice, fostering a long-term partnership built on trust and expertise.

AUTHORIZED DISTRIBUTOR:



CONTACT US

727-483-9140

sales@nextvision2020.com

nextvisioninstruments.com



WE BUY USED EQUIPMENT



769 Wesley Ave,
Tarpon Springs, FL, 34689
727-483-9140

2425 Youth Monroe Road,
Monroe, GA, 30655
833-627-0546