

OptoVue iVue 100-Gen 2 OCT



Description

The Optovue iVue is the benchmark for eye care practitioners seeking unmatched OCT performance and value – with capabilities you would expect to cost far more.

At first glance, the iVue® OCT system may strike you as a simplified OCT. Lightweight and modular, it can be positioned wherever it suits your needs.

As for operational ease, from the moment you turn the system on, its familiar slit-lamp-style design makes scanning a breeze. But when you look deeper at the resulting diagnostic screens, you get a different picture—the big one.

Extras are Standard

The iVue provides an impressive array of standard features. OCT scanning and resolution are excellent.

The resulting reports for retina, optic nerve head, and anterior segment assessment are comprehensive, providing capabilities for which other systems charge extra—if they have them at all.

Some are Optovue exclusives such as FLV% and GLV% analysis and the iWellnessExam® for more personalized patient eye care.

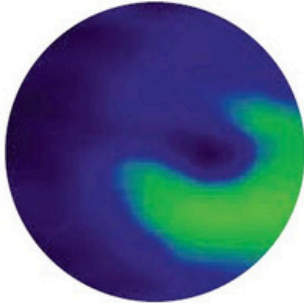

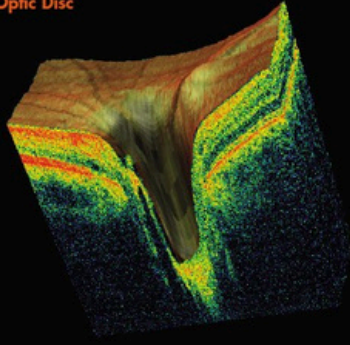
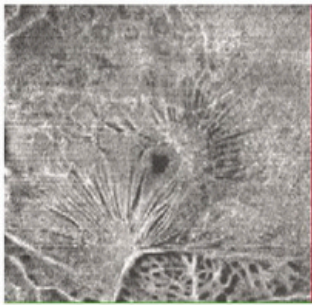
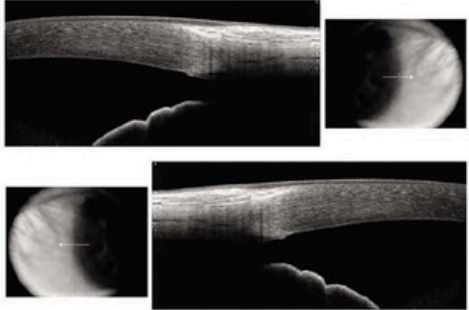
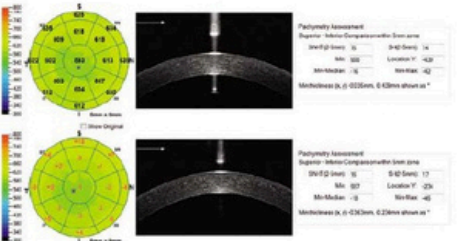


Optovue OCT iVue

Advanced diagnostic imaging capabilities

The iVue® platform supports highly advanced diagnostic imaging applications off the shelf, including the retina, optic nerve head, and anterior segment assessments.

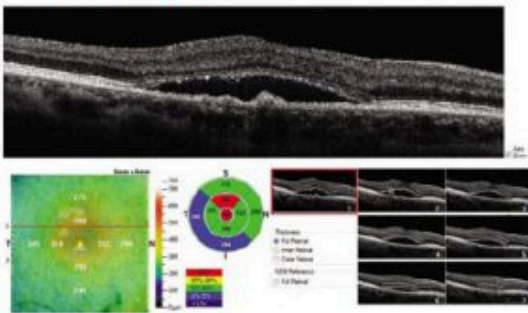
- **Ganglion Cell Complex (GCC)** – Advanced GCC imaging reveals ganglion cell and axon loss in optic nerve head disease. GCC thickness mapping improves clarity in structural change identification. Optovue's exclusive FLV% and GLV% analyses increase GCC sensitivity and specificity.
- **3D and En Face**—The 3D and en face view provides a multi-layer, high-resolution virtual dissection of the retina and optic disc and depicts them in a way that preserves the retina's natural curvature. This reduces distortion for simpler interpretation and enhanced 3D visual assessment.
- **Cornea Advance**—Cornea Advance expands iVue's clinical utility for pre-surgical planning and post-operative assessment. It enhances anterior chamber and cornea analysis via anterior segment angle measurements and pachymetry with change analysis.

<p>Ganglion Cell Complex (GCC®)</p> <p>Advanced GCC imaging reveals ganglion cell and axon loss in optic nerve head disease. GCC thickness mapping improves clarity in structural change identification. Optovue's exclusive FLV% and GLV% analyses increase GCC sensitivity and specificity.</p>	<p>GCC Thickness Map</p> 	<p>GCC Thickness with Normative Comparison</p> 																																								
<p>3D and En Face</p> <p>3D and en face view provides multi-layer, high-resolution virtual dissection of the retina and optic disc, and depicts them in a way that preserves the retina's natural curvature. This reduces distortion for simpler interpretation and enhanced 3D visual assessment.</p>	<p>3D Optic Disc</p> 	<p>En Face Presentation</p> 																																								
<p>Cornea Advance</p> <p>Cornea Advance expands iVue's clinical utility for pre-surgical planning and post-operative assessment. Analysis of the anterior chamber and cornea is enhanced via anterior segment angle measurements and pachymetry with change analysis.</p>	<p>Angle Scan with Measurement Tools</p> 	<p>Pachymetry with Change Analysis</p>  <table border="1"> <thead> <tr> <th colspan="4">Pachymetry Assessment</th> </tr> <tr> <th>Superior</th> <th>Inferior</th> <th>Comparative</th> <th>Mean Error</th> </tr> </thead> <tbody> <tr> <td>340µm</td> <td>340µm</td> <td>0µm</td> <td>0µm</td> </tr> <tr> <td>Min</td> <td>Max</td> <td>Location</td> <td>Min/Max</td> </tr> <tr> <td>320µm</td> <td>360µm</td> <td>0.000mm</td> <td>0.000mm</td> </tr> </tbody> </table> <table border="1"> <thead> <tr> <th colspan="4">Pachymetry Assessment</th> </tr> <tr> <th>Superior</th> <th>Inferior</th> <th>Comparative</th> <th>Mean Error</th> </tr> </thead> <tbody> <tr> <td>340µm</td> <td>340µm</td> <td>0µm</td> <td>0µm</td> </tr> <tr> <td>Min</td> <td>Max</td> <td>Location</td> <td>Min/Max</td> </tr> <tr> <td>320µm</td> <td>360µm</td> <td>0.000mm</td> <td>0.000mm</td> </tr> </tbody> </table>	Pachymetry Assessment				Superior	Inferior	Comparative	Mean Error	340µm	340µm	0µm	0µm	Min	Max	Location	Min/Max	320µm	360µm	0.000mm	0.000mm	Pachymetry Assessment				Superior	Inferior	Comparative	Mean Error	340µm	340µm	0µm	0µm	Min	Max	Location	Min/Max	320µm	360µm	0.000mm	0.000mm
Pachymetry Assessment																																										
Superior	Inferior	Comparative	Mean Error																																							
340µm	340µm	0µm	0µm																																							
Min	Max	Location	Min/Max																																							
320µm	360µm	0.000mm	0.000mm																																							
Pachymetry Assessment																																										
Superior	Inferior	Comparative	Mean Error																																							
340µm	340µm	0µm	0µm																																							
Min	Max	Location	Min/Max																																							
320µm	360µm	0.000mm	0.000mm																																							

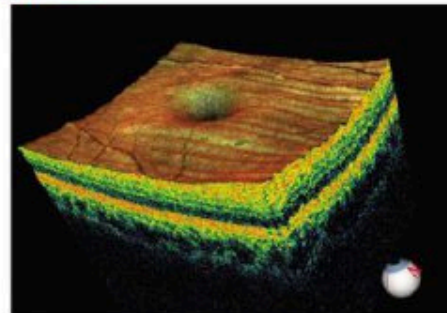
Essential imaging capabilities

- Retina mapping and analysis – Retina mapping with normative comparison, retina change analysis, and 3D retinal imaging with en-face presentation are all depicted in high-resolution, easy-to-interpret color reports.
- Optic disc and RNFL assessment – Advanced capabilities include RNFL and GCC® combination reports with normative comparison and RNFL and GCC trend analysis –both standard.
- Comprehensive anterior segment analysis – Anterior segment capabilities include highly detailed reports for pachymetry mapping with change analysis and anterior segment angle measurement.

Retina Mapping



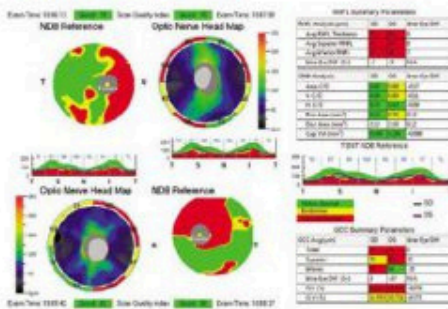
3D Macula



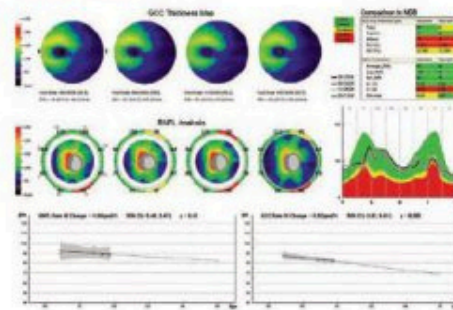
Retina mapping and analysis

Retina mapping with normative comparison, retina change analysis and 3D retinal imaging with en face presentation are all depicted in high-resolution, easy-to-interpret color reports.

RNFL/GCC OU Report



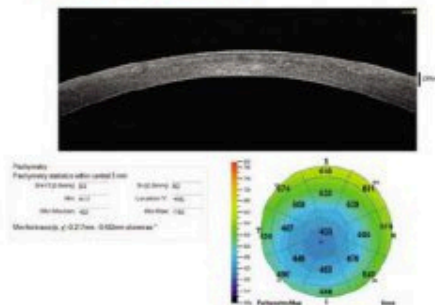
Trend Analysis



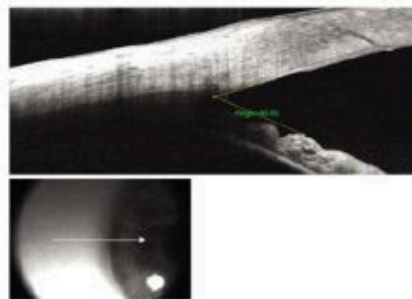
Optic disc and RNFL assessment

Advanced capabilities include RNFL and GCC® combination reports with normative comparison as well as RNFL and GCC trend analysis –both standard.

Pachymetry Mapping



Anterior Segment Angle with Measurement



Comprehensive anterior segment analysis

Anterior segment capabilities include highly detailed reports for pachymetry mapping with change analysis and anterior segment angle measurement.

iWellnessExam

The iWellnessExam® is an Optovue exclusive available on all iSeries OCT systems that delivers a quick, easy OCT scan to promote better overall patient eye health.

Its usefulness stems from a single, comprehensive report that depicts:

- Retinal thickness and GCC® thickness with normative comparison
- Symmetry analysis
- FLV% and GLV%, proprietary Optovue GCC metrics that provide important information to aid in ocular disease diagnosis and management
- Eight high-resolution B-scans

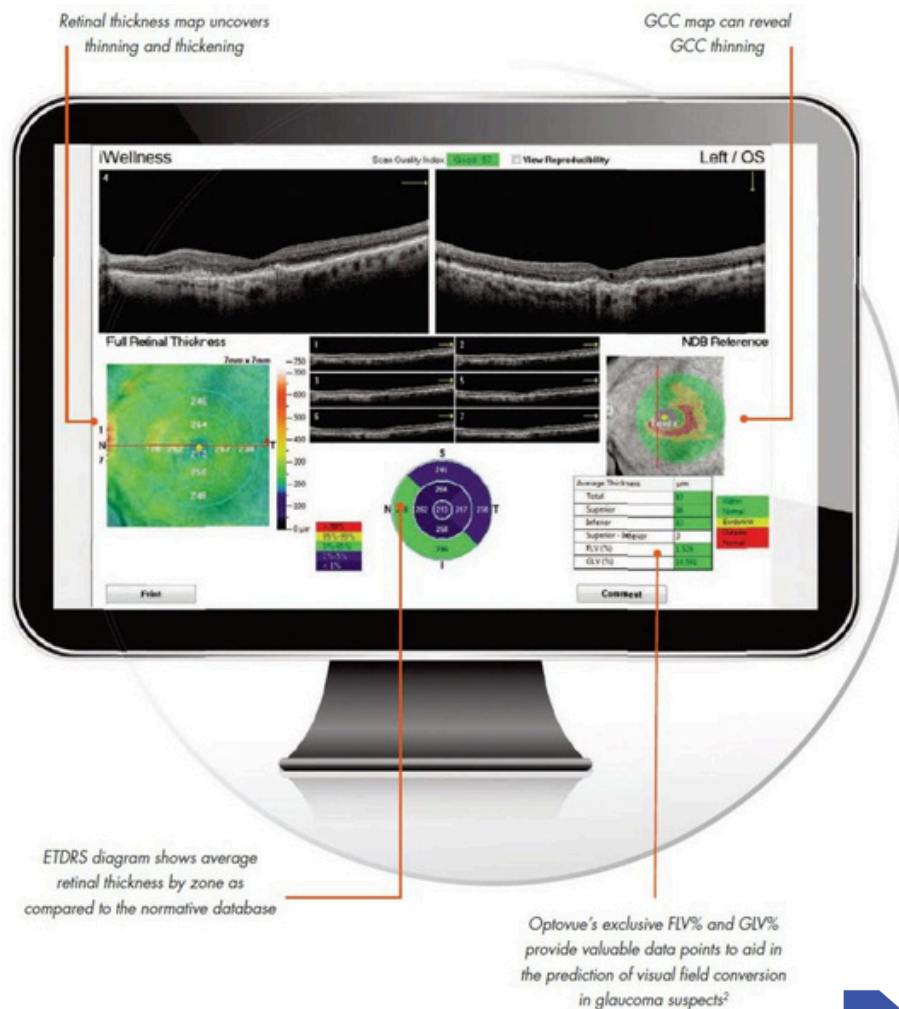
iWellnessExam benefits patients

Ultimately iWellness benefits patients by helping them become more involved in their eye health. Scanning is simple and quick, and each patient receives comprehensive, personalized eye health information in an easy-to-understand report.

iWellnessExam benefits eye care providers

iWellness benefits ECPs by providing a valuable assessment tool that can reveal the need for more extensive imaging. It also streamlines the exam process by quickly confirming normal—or helping you more efficiently diagnose pathology.

Optovue's current iWellnessExam users have affirmed that the iWellnessExam improves patient involvement, loyalty, and retention. This helps you grow and differentiate your eye care practice while also providing a new revenue stream.



Networking Solutions

- NetVue Pro allows viewing and modifying images from a single Optovue OCT system on up to eight review stations. In addition, with NetVue Pro, new patient scans may be captured while existing scans are reviewed.
- NetVue Enterprise enables viewing and modifying images from multiple Optovue OCT systems on up to 20 review stations.
- NetVue Web is a browser-based solution that brings Optovue OCT images to a smartphone, tablet, or PC.
- DICOM. All Optovue products are DICOM compatible.

Technical Specifications Optovue iVue OCT

Scanner	
OCT Image	26,000 A-scan / second
Depth resolution (in tissue)	5.0 um
Transverse Resolution	15 um (retina)
Scan Range	
Depth	2 – 2.3 mm(retina)
Scan Beam Wavelength	840 nm (+/- 10 nm)
OCT Fundus Image (En Face)	
FOB	(H) 21 deg x (V) 21 deg
Minimum Pupil Diameter	2.5 mm
External Image (Live IR) FOV	13 mm x 9 mm
Table	
Dimensions (in)	(W)19.1 x (L)34.4 x (H) 263-343
Weight (lbs)	79