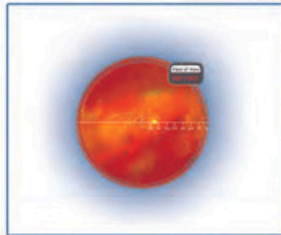
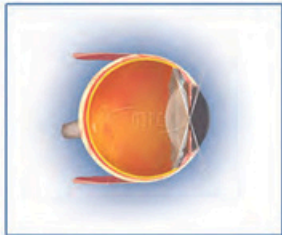




A HALMA COMPANY

The Finest Ophthalmic Imaging



[catalog]
2017



Classic Indirect BIO Lenses

In 1956, aspheric ophthalmic lenses for subnormal vision were developed by Dr. David Volk. He found that an aspheric surface corrected the aberrations present in more common spherical lenses. Several developments occurred with the aspheric lens designs through the years, delivering far superior imaging for BIO examinations. In 1982 all Volk lenses for indirect ophthalmoscopy were redesigned with both surfaces aspheric, providing a substantial improvement in image quality. The 20D and other Volk BIO lenses have been known as the industry standard for decades, and are still widely used in every corner of the world today.

Classic BIO Lenses	Field of View	Image Mag.	Laser Spot Mag. Factor	Working Distance	Primary Application
Macula Plus® 5.5	36° / 43°	5.50x	.18x	80mm	Ultra-high resolution viewing of posterior pole
14D Large	36° / 47°	4.30x	.23x	75mm	High magnification viewing of posterior pole
15D Large	36° / 47°	4.11x	.24x	72mm	High magnification viewing of posterior pole
20D Large	46° / 60°	3.13x	.32x	50mm	General diagnosis & treatment
Pan Retinal® 2.2	56° / 73°	2.68x	.37x	40mm	General diagnosis & treatment
25D Large	52° / 68°	2.54x	.39x	38mm	Median field diagnosis & treatment
28D Large	53° / 69°	2.27x	.44x	33mm	Small pupil diagnosis & treatment
30D Small	46° / 60°	2.10x	.48x	30mm	Small profile lens for ease of use within the orbit
30D Large	58° / 75°	2.15x	.47x	30mm	Small pupil diagnosis & treatment
40D Large	69° / 90°	1.67x	.6x	20mm	Pediatric ophthalmoscopy / veterinary apps.
Digital BIO Lenses	Field of View	Image Mag.	Laser Spot Mag. Factor	Working Distance	Primary Application
Digital ClearMag	38° / 49°	3.89x	.26x	60mm	For mid and far peripheral retinal viewing
Digital ClearField	55° / 72°	2.79x	.36x	37mm	

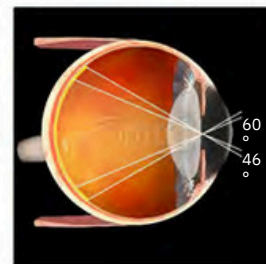
Classic Indirect BIO Lenses



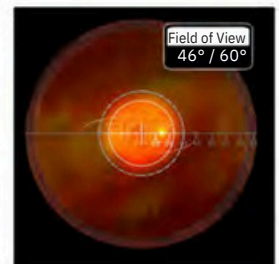
Primary Application – Industry standard general diagnostic lens

- Balance of magnification and field of view for general diagnosis
- Perfectly corrected for field curvature, astigmatism, aberrations and coma
- Available in AutoClave Sterilizable (ACS) design (see page 26) or Single Use design (see page 37)

Product code: V20LC



2D View



Field of View
46° / 60°

Classic Slit Lamp Lenses

In 1956, aspheric ophthalmic lenses for subnormal vision were developed by Dr. David Volk. He found that an aspheric surface corrected the aberrations present in more common spherical lenses. Several developments occurred through the years, leading up to 1982 when all Volk lenses for indirect ophthalmoscopy were redesigned with both surfaces aspheric, providing a substantial improvement in image quality. A series of indirect ophthalmoscopy lenses was developed, resulting in the choice of the 90 Diopter lens as the most practical for indirect ophthalmoscopy with the slit lamp. The Volk 60D and 90D lenses were commercialized providing a variety of characteristics; magnification, field of view and undilated pupil examination. The 60D and 90D lenses have been known as the industry standard for decades, having revolutionized the slit lamp examination in the 1970s.

Classic	Field of View	Image Mag.	Laser Spot	Working Distance	Primary Application
60D Classic	68° / 81°	1.15x	.87x	13mm	High magnification views of the posterior pole
78D Classic	81° / 97°	.93x	1.08x	8mm	General diagnosis and treatment
90D Classic	74° / 89°	.76x	1.32x	7mm	General diagnosis / small pupil examinations
Super Series	Field of View	Image Mag.	Laser Spot	Working Distance	Primary Application
Super 66®	80° / 96°	1.0x	1.0x	11mm	High Resolution viewing of the posterior pole
SuperField®	95° / 116°	.76x	1.3x	7mm	General retinal scanning situations
Super VitreoFundus®	103° / 124°	.57x	1.75x	4-5mm	Wide field retinal scanning and small pupil exams (3-4 mm)
SuperPupil XL	103° / 124°	.45x	2.2x	4mm	Examination through small pupils (2-3mm)
Digital Series	Field of View	Image Mag.	Laser Spot	Working Distance	Primary Application
Digital High Mag®	57° / 70°	1.30x	.77x	13mm	Highest resolution and magnification imaging of the posterior pole with reduced glare and reflections.
Digital 1.0x Imaging Lens	60° / 72°	1.0x	1.0x	12mm	High resolution 1.0x imaging with reduced glare ideal for optic disc measurements and slit lamp photography.
Digital Wide Field®	103° / 124°	.72x	1.39x	4-5mm	High resolution, wide field retinal scanning and reduced glare and reflections.



78D

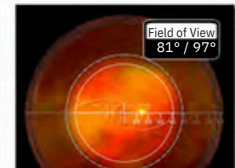
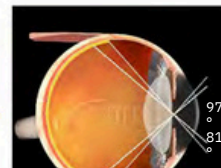
Primary Application – General Diagnosis and Laser Treatment

- Ideal balance of magnification and field of view
- Optimally designed for use within range of motion of all slit lamps

Product code: V78C

2D View

Field of View



90D

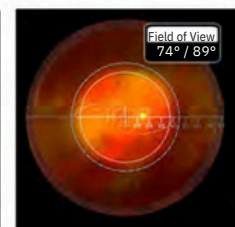
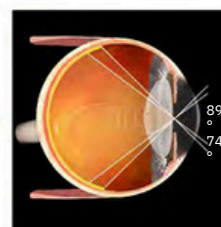
Primary Application – General Diagnosis and Small Pupil Examinations

- Original 90D lens started the slit lamp fundus examination revolution
- Small diameter ring is ideal for dynamic fundoscopy
- Outstanding general diagnostic lens, even through small pupils

Product code: V90C

2D View

Field of View



2D View

Field of View